

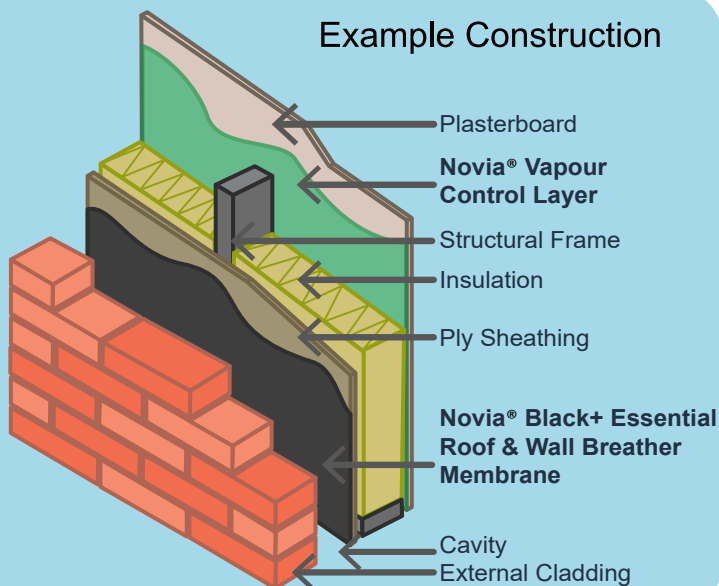


Black+ Essential[®] UKCA Roof and Wall Breather Membrane

Novia[®] Black+ Essential Roof and Wall Breather Membrane is a low cost, low weight, breather membrane approved for use in insulated wall applications, and is compliant to EN 13859-2 for walls. The material also meets EN 13859-1 for pitched roofing. **Novia[®] Black+ Essential** has excellent W1 water resistance but still provides high breathability. It also complies with EN 13501-1 Fire Classification E. The product is completely black on one side, grey on the reverse, with no text or images.



Example Construction



Key Features:

- 3-layer, roof and wall breather with microporous core
- Class W1 water resistance to EN 1928
- Airtight, and vapour permeable
- Fire classification E
- UKCA to EN 13859-1 (roofs) and EN 13859-2 (walls)
- Install as per BS 5534 UV Guidance
- Low cost, entry grade breather membrane

Visit our website for the full range of **Novia[®] Black+** breather membrane products. They are available in variety of weights and sizes, which are suitable for a variety of roof and wall applications. See datasheets for more product specific information.

	Value	Units	Test Method
Standard width	1.5	m	
Roll length	50	m	
Roll weight	7.2	kg	
Nominal weight	92	g/m ²	EN 1849-2
Tensile strength MD / CD	230 / 125	N/50mm	EN 12311-1
Elongation MD / CD	65 / 70	%	EN 12311-1
Tear Resistance MD / CD	75 / 80	N	EN 12310-1
Sd value	0.029	m	EN ISO 12572
Resistance to water penetration	W1	Class	EN 1928
Resistance to water penetration (after ageing)	W1	Class	EN 1928
Low temperature stability (no cracking at)	- 40	°C	EN 1109
Reaction to fire	E, d2	Class	EN 11925-2
UV resistance	Install as per BS 5534 UV Guidance		



Use the QR code to link direct to the product webpage.



DS1025BLK+ESS

NOTE: COSHH safety datasheets available upon request.

Date Published: October 2025. Novia's most recently published datasheet supercedes any previous versions which may still be in circulation.

www.novia.co.uk

01795 515 110

sales@novia.co.uk

Novia Limited Unit 3 Trilogy Eurolink V Industrial Park Sittingbourne Kent ME10 3NH



Installation Guidance for Walls:

Fix the **Novia® Black+ Essential** to the wall structure; upper layers should overlap lower layers. Work from the bottom moving upwards, using minimum overlaps of 100mm on the horizontal joints. Do not begin a vertical lap joint within 300mm of a corner, and vertical laps should be at least 150mm. Ensure the bottom timber is also protected by an overlap. Fix at suitable intervals with galvanised nails, stainless staples or similar fixings that will be permanent.

Do not leave the membrane unnecessarily exposed to weathering, high winds, excessive UV etc. as this may cause damage over time. If you must leave the membrane exposed for extended periods of time, consider the use of suitable temporary protection materials.

Installation Guidance for Roofs:

Novia® Black+ Essential can be installed in a range of roof applications, where cost is the main consideration. **Novia® Black+ Essential** can also be used in conventional cold roof applications. Fix the membrane to the roof structure and ensure upper layers overlap lower layers. Work from the bottom moving upwards and ensure there are minimum overlaps used as shown within BS 5534. The membrane should be overlapped 200mm on each side of the ridge. All vertical overlaps must be situated on a rafter and must be sealed. Fix at suitable intervals with galvanised nails, stainless staples or similar approved fixings that will be permanent. At any entry points for services (soil pipes, vents etc.), ensure that **Novia® Black+ Essential** is properly sealed. Where pipes etc. penetrate the underlay, cut neatly and accurately and turn edges up to give a tight water-resistant fit, and seal with Novia® tapes.

Installation Tapes:

We strongly advise the use of Novia installation tapes, as the use of tapes will greatly improve the performance and overall airtightness of the roof structure. We offer a single-sided **Novia® Breather Membrane Lap Tape** for basic installations and, for high specification work where there is even greater emphasis on air-tightness, we offer the optional **Novia® Double Sided Lap Tape**. For the very best standards of installation and air-tightness, we advise the use of both types of tape, which will ensure a long lasting, high quality, breathable and air-tight seal is formed.

Other Notes:

- Wind uplift information for roof applications is available upon request for Novia® Black+ Essential.
- Novia recommends a higher specification, heavier weight material (such as Novia® Black+ Ultra, Black+ Supreme or Black+ Pro) for most roofing applications, in accordance with BS 5534 wind uplift guidance.
- Ensure that a Novia Air & Vapour Control Layer, such as **Novia® 500g, 1000g or 1200g** (virgin grade polythene AVCLs) or **Novia® VC200 Reflective**, is installed on the warm side of the insulation to limit unwanted interstitial condensation. As little as 1% - 3% moisture contamination within the insulation can adversely affect the achieved thermal performance by more than 30%.
- Novia® Black+ Essential will reduce the risk of condensation within the roof or wall space, but in certain atmospheric conditions it can never be totally eliminated.
- Ensure that sufficient ventilation is incorporated to comply with all relevant building regulations.
- Always handle material carefully to prevent tears and punctures. Repair any on-site damage with Novia tapes.
- All Novia products should be stored horizontally, indoors and out of direct sunlight. External storage must be on a temporary basis. When stored externally, Novia products should be covered and protected from exposure to weather conditions, especially wind, rain, frost and UV. Pallets should not be stacked.