



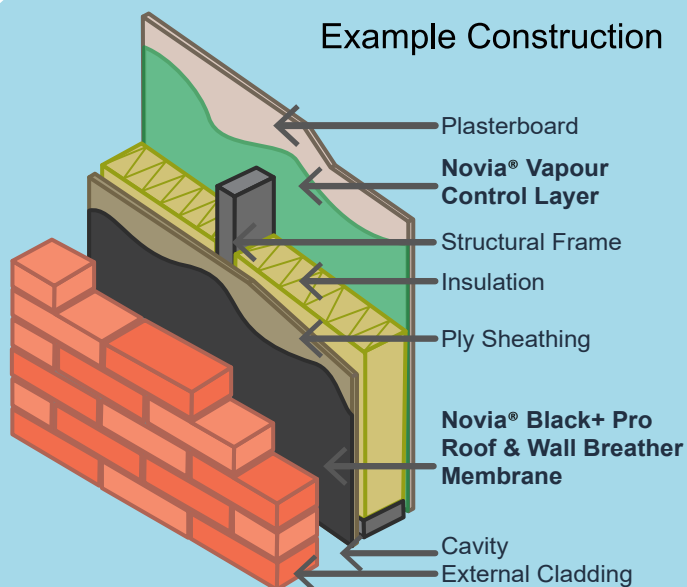
® Black+ Pro Roof and Wall Breather Membrane

UK
CA

Novia® Black+ Pro Roof and Wall Breather Membrane is a premium quality, heavy weight, strong and versatile breather membrane for all pitched cold and warm roofs, as well as insulated wall applications. The material meets EN 13859-1 for pitched roofing and EN 13859-2 for walls. **Novia® Black+ Pro** has excellent water resistance but still provides high breathability. It also complies with EN 13501-1 Fire Classification E. The product is completely black on one side, grey on the reverse, with no text or images, except for a 150mm overlap line.



Example Construction



Key Features:

- 3-layer, roof and wall breather with microporous core
- Class W1 water resistance to EN 1928
- Airtight, and vapour permeable
- Good tensile and nail tear strength
- Class E Fire Classification to EN 13501-1
- UKCA to EN 13859-1 (roofs) and EN 13859-2 (walls)
- Tested for BS 5534 wind uplift requirements
- Install as per BS 5534 UV Guidance

Visit our website for the full range of **Novia® Black+** breather membrane products. They are available in variety of weights and sizes, which are suitable for a variety of roof and wall applications. See datasheets for more product specific information.

	Value	Units	Test Method
Standard width	1 / 1.5	m	
Roll length	50	m	
Roll weight 1 / 1.5m	8 / 12	kg	
Nominal weight	150	g/m ²	EN 1849-2
Tensile strength MD / CD	325 / 195	N/50mm	EN 12311-1
Elongation MD / CD	50 / 85	%	EN 12311-1
Tear Resistance MD / CD	225 / 300	N	EN 12310-1
Sd value	0.029	m	EN ISO 12572
Resistance to water penetration	W1	Class	EN 1928
Resistance to water penetration (after ageing)	W1	Class	EN 1928
Low temperature stability (no cracking at)	- 40	°C	EN 1109
Reaction to fire	E	Class	EN 11925-2
UV resistance	Install as per BS 5534 UV Guidance		



Use the QR code to link direct to the product webpage.



NOTE: COSHH safety datasheets available upon request.

Date Published: September 2025. Novia's most recently published datasheet supersedes any previous versions which may still be in circulation.

DS0925BLK+Pro

www.novia.co.uk

01795 515 110

sales@novia.co.uk

Novia Limited Unit 3 Trilogy Eurolink V Industrial Park Sittingbourne Kent ME10 3NH



® Black+ Pro Roof and Wall Breather Membrane



Installation Guidance for Walls:

Fix the **Novia® Black+ Pro** to the wall structure; upper layers should overlap lower layers. Work from the bottom moving upwards, using minimum overlaps of 100mm on the horizontal joints. Do not begin a vertical lap joint within 300mm of a corner, and vertical laps should be at least 150mm. Ensure the bottom timber is also protected by an overlap. Fix at suitable intervals with galvanised nails, stainless staples or similar fixings that will be permanent.

Do not leave the membrane unnecessarily exposed to weathering, high winds, excessive UV etc. as this may cause damage over time. If you must leave the membrane exposed for extended periods of time, consider the use of suitable temporary protection materials.

Installation Guidance for Roofs:

Novia® Black+ Pro can be installed within all standard roof applications. **Novia® Black+ Pro** can also be used in conventional cold roof applications. Fix the membrane to the roof structure and ensure upper layers overlap lower layers. Work from the bottom moving upwards and ensure there are minimum overlaps used as shown within BS 5534. The membrane should be overlapped 200mm on each side of the ridge. All vertical overlaps must be situated on a rafter and must be sealed. Fix at suitable intervals with galvanised nails, stainless staples or similar approved fixings that will be permanent. At any entry points for services (soil pipes, vents etc.), ensure that **Novia® Black+ Pro** is properly sealed. Where pipes etc. penetrate the underlay, cut neatly and accurately and turn edges up to give a tight water-resistant fit, and seal with Novia tapes.

Novia® Black+ Pro is suitable for use in BS 5534 wind uplift applications. Following successful tests, **Novia® Black+ Pro** can be used with a $\leq 345\text{mm}$ batten in zones 1-4 without additional tapes, and in zones 1-5 using our Breather Membrane Lap Tape.

	$\leq 345\text{mm}$ batten gauge with battened laps	$\leq 250\text{mm}$ batten gauge with battened laps	$\leq 345\text{mm}$ batten gauge with taped laps	$\leq 345\text{mm}$ batten gauge with minimum 10mm counterbatten
Novia® Black+ Pro Zone Suitability	Zones 1 to 4	Zones 1 to 5	Zones 1 to 5	Zones 1 to 5
Novia® Black+ Pro Wind Uplift Resistance	1337 Pa	>1600 Pa	>1600 Pa	>1600 Pa

Installation Tapes:

We strongly advise the use of Novia installation tapes, even if tape is not specified for mandatory use within a particular zone under the BS 5534 wind uplift test results. The use of tapes will greatly improve the performance and overall airtightness of the roof structure. We offer a single-sided **Novia® Breather Membrane Lap Tape** for basic installations and, for high specification work where there is even greater emphasis on air-tightness, we offer the optional **Novia® Double Sided Lap Tape**. For the very best standards of installation and air-tightness, we advise the use of both types of tape, which will ensure a long lasting, high quality, breathable and air-tight seal is formed.

Other Notes:

- Ensure that a Novia Air & Vapour Control Layer, such as **Novia® 500g, 1000g or 1200g** (virgin grade polythene AVCLs) or **Novia® VC200 Reflective**, is installed on the warm side of the insulation to limit unwanted interstitial condensation. As little as 1% - 3% moisture contamination within the insulation can adversely affect the achieved thermal performance by more than 30%.
- **Novia® Black+ Pro** will reduce the risk of condensation within the roof space, but in certain atmospheric conditions it can never be totally eliminated.
- Ensure that sufficient ventilation is incorporated to comply with all relevant building regulations.
- Always handle material carefully to prevent tears and punctures. Repair any on-site damage with Novia tapes.
- All Novia products should be stored horizontally, indoors and out of direct sunlight. External storage must be on a temporary basis. When stored externally, Novia products should be covered and protected from exposure to weather conditions, especially wind, rain, frost and UV. Pallets should not be stacked.

This datasheet represents the latest understanding of the subject. However, it is for the ultimate user to determine suitability of Novia products within specific applications. The advice and information we have provided is general in nature, and is subject to future revision.

Date Published: September 2025. Novia's most recently published datasheet supercedes any previous versions which may still be in circulation.

DS0925BLK+Pro