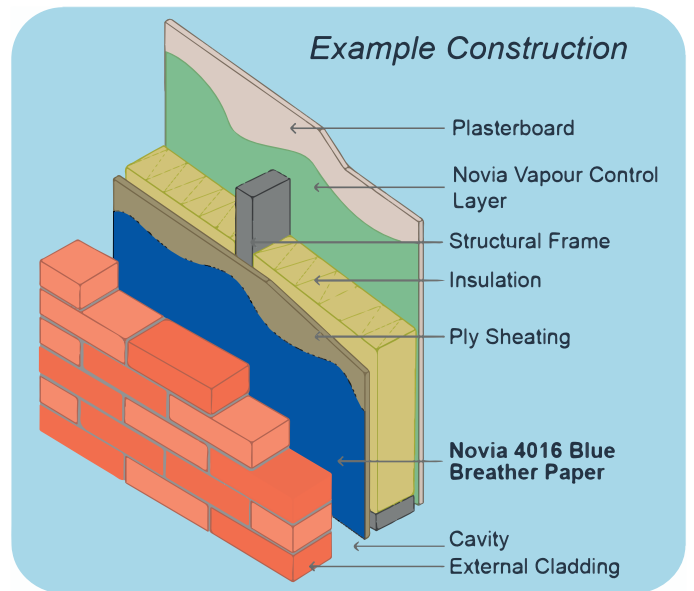


**Novia® 4016 Blue Breather Paper** is a traditional wall breather membrane, which was originally manufactured to meet the requirements of **BS 4016 Type 2**. This is a UKCA marked product for use as a breather membrane to BS 13859-2 (Part 2 Underlays for walls).



- Manufactured from natural materials
- Meets BS 4016 Type 2 requirements
- Ideal for use on timber frame installations
- Suitable for use immediately prior to overcladding
- UKCA to BS 13859-2
- Easy to install
- Fully recyclable
- Traditional building product
- DoC available on request



	Value	Units	Test Method
Standard Width	1	m	EN 1848-2
Roll Length	100	m	EN 1848-2
Roll Weight	13.5	kg	EN 1849-2
Mass per Unit Area	125	g/m <sup>2</sup>	EN 1849-2
Resistance to Water Penetration	W2	Class	EN 13111
Resistance to Vapour Transmission	813	g/m <sup>2</sup> /d	EN ISO 12572
Resistance to Tearing (MD/CD)	15 / 15	N	EN 12310-1
Tensile Force Property (MD/CD)	390 / 220	N/50mm	EN 12311-1
Tensile Elongation Property (MD/CD)	2 / 5	%	EN 12311-1

Scan the QR code below to visit the product webpage



DS0222\_BS4016BB

## Installation guidance for walls :

Fix the Novia® 4016 Blue Breather Paper to the wall structure; ensure upper layers overlap lower layers. Work from the bottom moving upwards and ensuring there are minimum overlaps of 100 mm on the horizontal joints. Do not begin a vertical lap joint within 300 mm of a corner, and vertical laps should be at least 150 mm. Ensure the bottom timber is also protected by an overlap. Fix at suitable intervals with galvanised nails, stainless staples or similar fixings that will be permanent.

Do not leave the membrane exposed to any weathering, high winds, excessive UV etc. as this will cause damage over time. Due to the nature of the product, BS 4016 states that it is suitable for installation 'immediately prior to cladding'. If you must leave the membrane exposed for extended periods of time, you should use a suitable temporary protection material. Contact the Novia sales team for more information.

BS 4016 Type 2 membranes are also 'not acceptable for use on prefabricated assemblies which will be exposed during transport and erection'.

Novia Ltd suggests the use of **Novia® Double Sided Adhesive Tape** and **Novia® Breather Membrane Lap Tape** for all laps and seals on Novia® 4016 Blue Breather Paper.

## Other notes :

- Always handle material carefully to prevent tears and punctures and repair all damage.
- Ensure that sufficient ventilation is incorporated to comply with all relevant building regulations and technical standards, such as BS 5250.
- Novia® 4016 Blue Breather Paper must not be used in pitched or flat roof applications.
- Store product in suitable conditions.