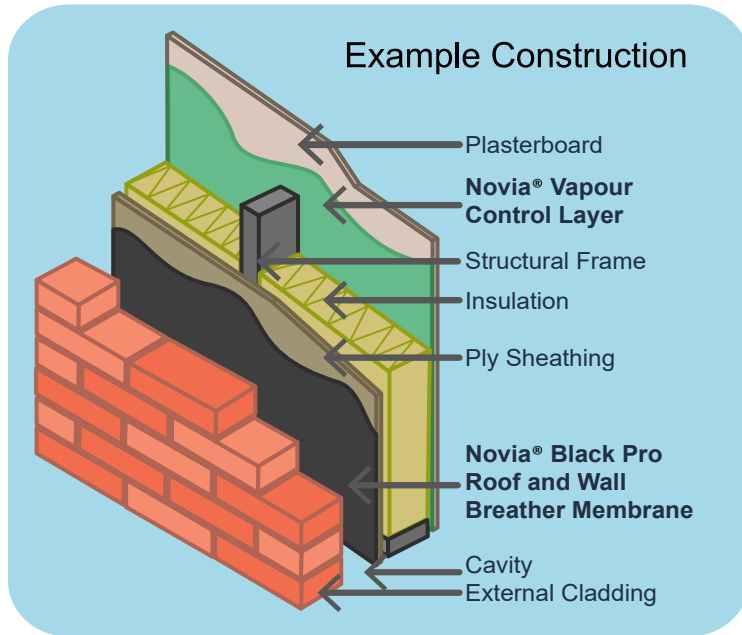


Novia® Black Pro Roof and Wall Breather Membrane is a premium quality, heavy weight, versatile, breather membrane for all pitched cold and warm roofs, as well as insulated wall applications. The material meets EN 13859-1 for pitched roofing and EN 13859-2 for walls. **Novia® Black Pro** has excellent water resistance but still provides high breathability. It also complies with EN 13501-1 fire classification grade E. The product is completely black on one side, white on the reverse, with no text or images on, except for a 150mm overlap line.



- Fully airtight
- Class W1 water resistant to EN 1928
- Highly vapour permeable, but airtight
- Single product for all roofs and walls
- Excellent tensile and nail tear strength
- Grade E (fire) to EN 13501-1
- Install as per BS 5534 UV guidance
- CE to EN 13859-1 and EN 13859-2
- Tested for BS 5534 wind uplift requirements

	Value	Units	Test Method
Standard Width	1.5	m	
Roll Length	50	m	
Roll Weight	11.5	kg	EN 1849-2
Nominal weight	146	g/m ²	EN 1849-2
Tensile strength MD / CD	315 / 220	N/50mm	EN 12311-1
Elongation MD / CD	60 / 70	%	EN 12311-1
Resistance to tearing MD / CD	180 / 220	N	EN 12310-1
Water vapour resistance, Sd	0.05	m	EN 12572
Resistance to water penetration	W1	Class	EN 1928
Resistance to water penetration (after ageing)	W1	Class	EN 1928
Resistance to air penetration	0.0	m ³ /m ² .h.50.pa	EN 12114
Low temperature stability	- 40	°C	EN 1109
Reaction to fire	E*	Class	EN 13501-1
UV resistance	Install as per BS 5534 UV Guidance		

* Fire class tested on chipboard in accordance with EN 13238: 2010.



Use the QR code to link direct to the product webpage.



DS0124_BlackPro

NOTE: COSHH safety datasheets available upon request.

Date Published: January 2024. Novia's most recently published datasheet supercedes any previous versions which may still be in circulation.

Installation Guidance for Walls:

Fix the **Novia® Black Pro** to the wall structure; upper layers should overlap lower layers. Work from the bottom moving upwards, using minimum overlaps of 100 mm on the horizontal joints. Do not begin a vertical lap joint within 300 mm of a corner, and vertical laps should be at least 150 mm. Ensure the bottom timber is also protected by an overlap. Fix at suitable intervals with galvanised nails, stainless staples or similar fixings that will be permanent.

Do not leave the membrane unnecessarily exposed to weathering, high winds, excessive UV etc. as this may cause damage over time. If you must leave the membrane exposed for extended periods of time, consider the use of suitable temporary protection materials.

Installation Guidance for Roofs:

Novia® Black Pro can be installed within all standard roof applications. On insulated warm roofs, the membrane may be placed directly onto the insulation or boarded roof if required. **Novia® Black Pro** can also be used in conventional cold roof applications. Fix the membrane to the roof structure and ensure upper layers overlap lower layers. Work from the bottom moving upwards and ensure there are minimum overlaps used as shown within BS 5534.

Minimum Overlap

Roof Pitch	Horizontal Lap (mm)	Vertical Lap (mm)
12.5° to under 15°	225	100
15° and above	150	100

The membrane should be overlapped 200mm on each side of the ridge. All vertical overlaps must be situated on a rafter and must be sealed. Fix at suitable intervals with galvanised nails, stainless staples or similar approved fixings that will be permanent. At any entry points for services (soil pipes, vents etc.), ensure that **Novia® Black Pro** is properly sealed. Where pipes etc. penetrate the underlay, cut neatly and accurately and turn edges up to give a tight water-resistant fit, and seal with **Novia®** tapes.

Wind Uplift

	≤ 345mm batten gauge with battened laps	≤ 250mm batten gauge with battened laps	≤ 345mm batten gauge with taped laps
Novia Black Pro Zone Suitability	Zone 1-2	Zone 1 to 5	Zone 1 to 5
Novia Black Pro Wind Uplift Resistance	975 Pa	2257 Pa	1967 Pa

Installation Tapes:

We strongly advise the use of **Novia** installation tapes, even if tape is not specified for mandatory use within a particular zone under the BS 5534 wind uplift test results. The use of tapes will greatly improve the performance and overall airtightness of the roof structure. We offer a single-sided **Novia** Breather Membrane Lap Tape for basic installations, and for high specification work where there is even greater emphasis on air-tightness we offer the optional **Novia** Double-Sided Adhesive Tape. For the very best standards of installation and air-tightness, we advise the use of both types of tape, which will ensure a long lasting, high quality, breathable and air-tight seal is formed.

Other Notes:

- Ensure that a **Novia** Air & Vapour Control Layer such as **Novia®** virgin grade polythene (500g, 1000g, or 1200g) or VC200 Reflective is installed on the warm side of the insulation to limit unwanted interstitial condensation. As little as 1 - 3% moisture contamination within the insulation can adversely affect the achieved thermal performance by more than 30%.
- **Novia®** Black Pro will reduce the risk of condensation within the roof space but in certain atmospheric conditions it can never be totally eliminated.
- Ensure that sufficient ventilation is incorporated to comply with all relevant building regulations.
- Always handle material carefully to prevent tears and punctures. Repair any on-site damage with **Novia** tapes.
- All **Novia** products should be stored horizontally, indoors and out of direct sunlight. External storage must be on a temporary basis. When stored externally, **Novia** products should be covered and protected from exposure to weather conditions, especially wind, rain, frost and UV. Pallets should not be stacked.

This datasheet represents the latest understanding of the subject. However, it is for the ultimate user to determine suitability of **Novia** products within specific applications. The advice and information we have provided is general in nature, and is subject to future revision.

Date Published: January 2024. **Novia's** most recently published datasheet supercedes any previous versions which may still be in circulation.

DS0124_BlackPro