

NOVIA®

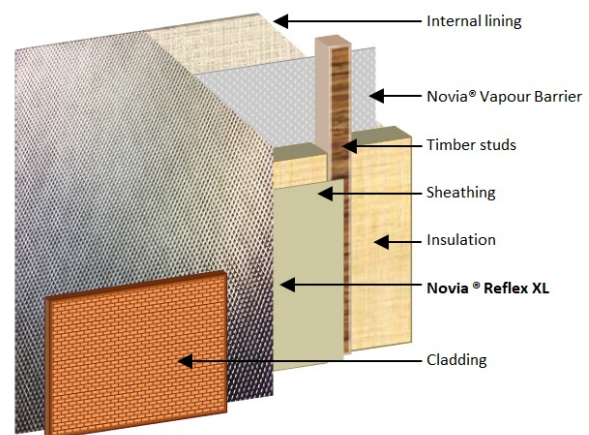
Reflex XL Breathable Reflective Wall Membrane

Novia® Reflex XL is a high quality reflective breather membrane for all insulated frame applications. This product complies to the higher standard of breathable membranes: EN 13859 - 1, unlike some other lower specification EN 13859 - 2 products. **Novia® Reflex XL** has the highest rating of water resistance available, W1, which far surpasses the lower W2 standard. If **Novia® Reflex XL** is installed facing an airgap, then additional R value benefits are achieved, providing an improved U value within the construction. A special coating is applied in production that minimises corrosion and largely avoids a loss in reflectivity over time. Some other similar membranes do not benefit from this enhanced product characteristic, which means any R value benefits will degrade over time.

Novia® Reflex XL also complies with EN 13501-1 fire classification grade E.



Example installation:



- ✓ **Low emissivity breathable wall underlay at a competitive price**
- ✓ **Tri-laminate membrane with low emissivity and high reflectivity**
- ✓ **Breathable membrane with maximum waterproofing properties – EN 1928 W1**
- ✓ **Transparent coating applied to reduce corrosion of reflectivity over time**
- ✓ **Grade E (Fire)**
- ✓ **1 months UV resistant**
- ✓ **High tensile and nail tear strength**
- ✓ **CE compliant to EN 13859-1 (higher standard)**
- ✓ **Complies with European CPR rules**
- ✓ **Cooler in summer and warmer in winter**

Roll size:

Standard width	2.7	m
Roll length	100	m
Roll weight	39	kg
Packing	20	Rolls per pallet

Nominal technical data:

	Value	Units	Test Method
Weight	128	g/m ²	EN 1849-2
Tensile strength MD/CD	250/150	N/50mm	EN 12311-1
Elongation MD/CD	70/65	%	EN 12311-1
Tear resistance MD/CD	112/150	N	EN 12310-1
Resistance to air penetration	0.009	m ³ /(m ² *h *50PA)	EN 12114
Sd value	0.12	metres	EN 12572
Resistance to water penetration	W1	Class	EN 1928
Resistance against fire	E	Class	EN 13501-1
Temperature resistance	-40 to + 100	°C	
UV Resistance	1	months (protect from heavy weather)	
Emissivity	0.22	ε	EN 15976 - 2011

NOVIA LTD, Unit 12 Heronden Road, Parkwood Industrial Estate, Maidstone, Kent, ME15 9YR

Telephone 01622 678952 or Fax 01622 679025 or e-mail: sales@novia.co.uk

www.novia.co.uk

DS0419_ReflexXL

NOVIA[®] Reflex XL Breathable Reflective Wall Membrane

European Construction Products Regulations (CPR)

Novia[®] Reflex XL is fully compliant with mandatory CE marking requirements, introduced under the 2013 Construction Products Regulations. Under this European directive all products covered by a current hEN must comply with the standard. Third party accreditation alone is no longer sufficient, nor relevant. Any affected products manufactured after the implementation date in July 2013 must conform to the CPR standard, and must be CE approved.

Installation Guidelines For Walls

Fix the **Novia[®] Reflex XL** membrane to the wall structure; ensure upper layers overlap lower layers, and the reflective side faces outwards into the cavity. Work from the bottom moving upwards and ensuring there are minimum overlaps of 100 mm on the horizontal joints. Do not begin a vertical lap joint within 300 mm of a corner, and vertical laps should be at least 150 mm. Ensure the bottom timber is also protected by an overlap. Fix at suitable intervals with galvanised nails, stainless staples or similar fixings that will be permanent. Do not leave the membrane unnecessarily exposed to weathering, high winds, excessive UV etc. as this may cause damage over time. If you must leave the membrane exposed for extended periods of time, consider the use of suitable temporary protection materials.

Tapes

We strongly advise the use of Novia installation tapes, which will greatly improve the performance and overall airtightness of the build. We offer our single-sided **Novia[®] Breather Membrane Lap Tape** for standard installations, but for high specification work where there is an even greater emphasis on air-tightness we also suggest the use of our optional **Novia[®] Double-Sided Adhesive Tape**. For the very best standards of installation and air-tightness we advise the use both types of tape, as this will ensure a long lasting, high quality, breathable and air-tight seal is maintained.

Other notes

- Ensure that an air and vapour control layer (AVCL) such as **Novia[®] VC2** or **Novia[®] VC8 Reflective** is installed on the warm side of the construction. This will provide a moisture and air leakage barrier to limit energy losses and protect the construction from damage by unwanted vapour condensation. As little as 1 to 3% unwanted moisture contamination within the insulation can adversely affect its actual achieved thermal performance by up to one third.
- Improved R and U values will require the design of a cavity in front of the reflective surface. The thickness of the cavity, the degree to which it is ventilated and the angle of installation, will all contribute to determining the achieved additional reflective benefit. For further details see various available software packages such as the BRE calculation model.
- Do not leave **Novia[®] Reflex XL** unnecessarily exposed to weathering. High winds, excessive UV and precipitation could cause damage to the reflective surface. If you must leave the membrane exposed for excessive periods of time, then the use of a suitable temporary protection material is highly recommended.
- Always handle material carefully to prevent tears and punctures. Repair any damage which does occur with suitable tape and a patch of Reflex XL membrane.
- Ensure that sufficient ventilation is incorporated to comply with all relevant building regulations and technical standards, such as BS 5250.
- Store all materials in suitable conditions.
- A Declaration of Performance (DoP) is available upon request

This datasheet represents the latest understanding of the subject. However it is for the ultimate user to determine suitability of our products within specific applications. The advice and information we have provided is general in nature, and is subject to future revision.

NOVIA LTD, Unit 12 Heronden Road, Parkwood Industrial Estate, Maidstone, Kent, ME15 9YR

Telephone 01622 678952 or Fax 01622 679025 or e-mail: sales@novia.co.uk

www.novia.co.uk

DS0419_ReflexXL